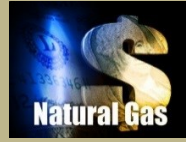


SWEETWATER ENGINEERING COMPANY LP



Strategic Industry Sector Partners – Industrial Engineering Limited Partnership

Electric Car Wireless Recharging Pad Patent Purchase Contract



UNITED STATES PATENT
AND
TRADEMARK OFFICE

Electric Car Wireless Recharging Pad Patents



The Strategic Industry Sector Corporations that becomes a Partner with Pendulum Limited Partners will make a Pro Rata Share Capital Investment to incorporate Sweetwater Engineering Company LP and Register a Division of the Industrial Engineering Research Limited Partnership to conduct Business in their domicile country.

Purchasing Electric Car Wireless Recharging Pad Patents from Patent Holders that are Filed with the United States Patent and Trademark Office, as well as Patents that are Filed in European countries, in Japan, or Filed in any International Government Patent Offices, to develop to Wireless Technologies.

Hiram R. Davis
Corporate Secretary and Director of Operations
Small Manufacturing Industry Sector Statistical Analyst

Website: www.SWEGResearchInstitute.org

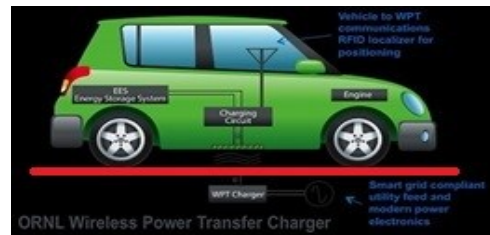
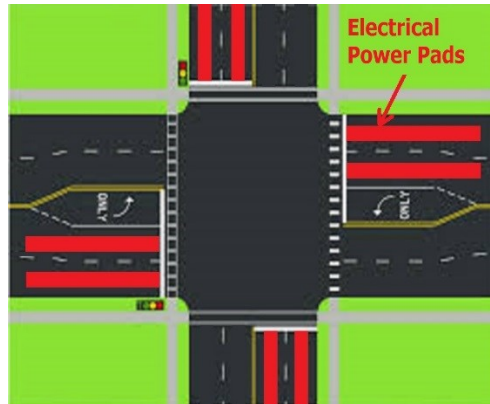
Email: HiramDavis@WorkplaceED.com

Dallas Texas – Worldwide Operations Headquarters Phone: 214.PLANNER (752.6637)

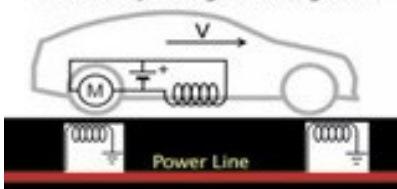
21ST CENTURY RED LIGHT ELECTRIC CAR WIRELESS RECHARGING PAD PATENTS



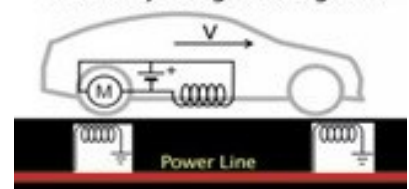
Electric Car Wireless Recharging Pad Patent Purchase Contract



The Solution: Magnetic fields that wirelessly charge moving cars.



The Solution: Magnetic fields that wirelessly charge moving cars.



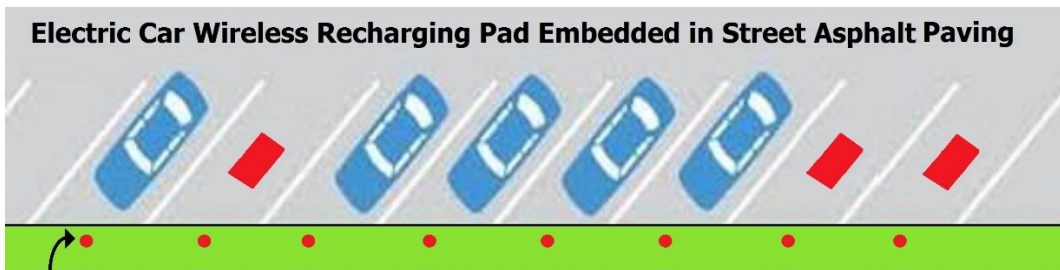
Street Embedded Electric Car Wireless Recharging Pad Patent Purchase Contract



21ST CENTURY ELECTRIC CAR WIRELESS PARKING SPACE RECHARGING PAD PATENTS



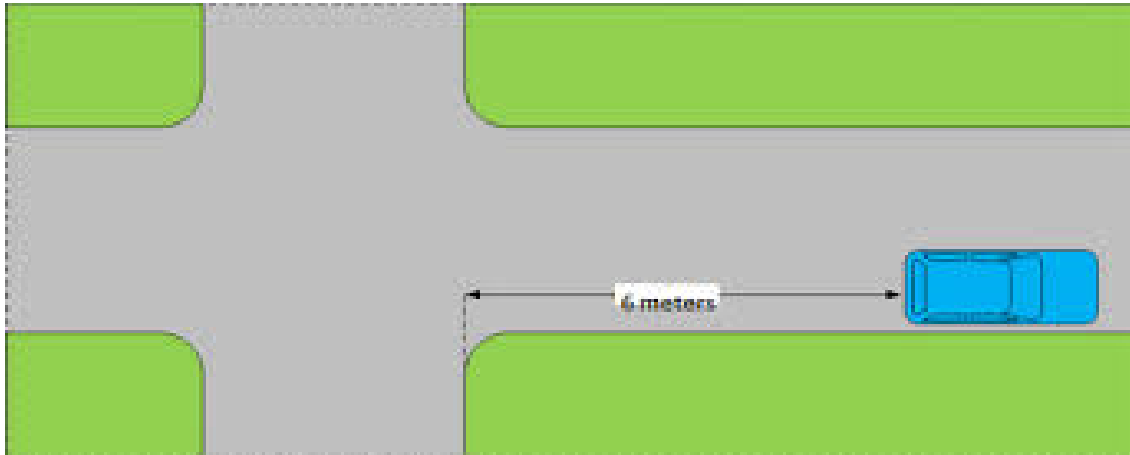
Wireless Electric Car Recharging Pad Embedded in Asphalt Parking Lot Paving



Electric Car Wireless Recharging Pad Embedded in Street Asphalt Paving

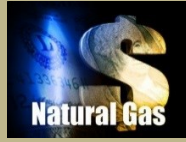
Future - Electric Car Wireless Recharging Parking Meter

Electric Car Recharging Pad Embedded in Street Asphalt Paving



Future Electric Car Wireless Recharging City Curb Meter Parking Space

SWEETWATER ENGINEERING COMPANY LP



Strategic Industry Sector Partners – Industrial Engineering Limited Partnership



Sweetwater Engineering Company LP Electric Car Wireless Recharging Pads



Purchase Contract

Street Embedded Electric Car Recharging Pads

U.S. States Patent and Trademark Office

Natural Gas Investment Banker Limited Partners of Sweetwater Engineering Company LP, will execute a Contract to Purchase Electric Car Wireless Recharging Street Roadway Embedded Electric Recharging Pads from Patent Holders Filed with the United States Patent and Trademark Office, as well as Patents that are Filed in European countries, in Japan, or any International Government Patent Offices.

Hiram R. Davis

Corporate Secretary and Director of Operations
Sweetwater Engineering Company LP

